

Concept Proposal
Biddeford Education and Training Center for All Ages
at the
Life Center at Five Points

In Cooperation with:

- Biddeford Regional Center of Technology
- Biddeford Adult Education
- York County Community College
- University of New England
- University of Maine/Augusta
- York County Community Action
- York County Career Center
- City of Biddeford
- Saco Biddeford Chamber of Commerce

Purpose:

To create an easily accessible education and training program that provides a seamless workforce pathway for all ages.

Statement:

The proposed education center will provide training and education for entry and re-entry into the local and regional workforce. The goal is to provide “relevance” education to young and old workers that will more closely align to the needs of existing businesses, particularly in the areas of culinary, hospitality, health and childcare training, machining and technology. The Center will work to serve:

- Youth moving through the Biddeford vocational school system;
- Young families and households needing additional remedial guidance, training, and day care;
- Immigrant families new to the area;
- Adults interested in re-training opportunities; and,
- Older adults interested in enrichment opportunities.

The Center embraces a one-stop concept for assistance. Visitors to the center will connect to a variety of services that range from basic remedial education and living skills to connection with critical social service agencies that will help guide their path to successful employment. Levels of support will be fashioned to meet the needs of the family or individual.

Through the partnership, an individual will move seamlessly from basic certification in a selected field to a degree, should they so choose. As a hub, the center will bring a variety of professionals together with

Draft: December 16, 2021

members of the community to further education and employment opportunities in Biddeford and York County.

Specializing in:

- Culinary and Hospitality skills
- Health Care Training and Certification
- Re-training Opportunities for adults
- Life and job development skills
- Degree and Certification Programs
- Workforce Development
- Technology training
- Child Care Services and Education
- Family Services
- Mental health services coordination
- Coordination of Resources

Capital Construction Needs: \$4.4 Million

Sources:

State ARPA Funding (\$3 million)

Department of Labor

Department of Education

Department Economic and Community Development

York County (ARPA) ?

City of Biddeford (ARPA) ?

Operational Needs (no labor; \$560,000 annually)

Timeframe: 3-year Pilot Envisioned

Sources:

BRCOT: \$250,000

Private Donation: \$100,000

To Be Determined: \$210,000

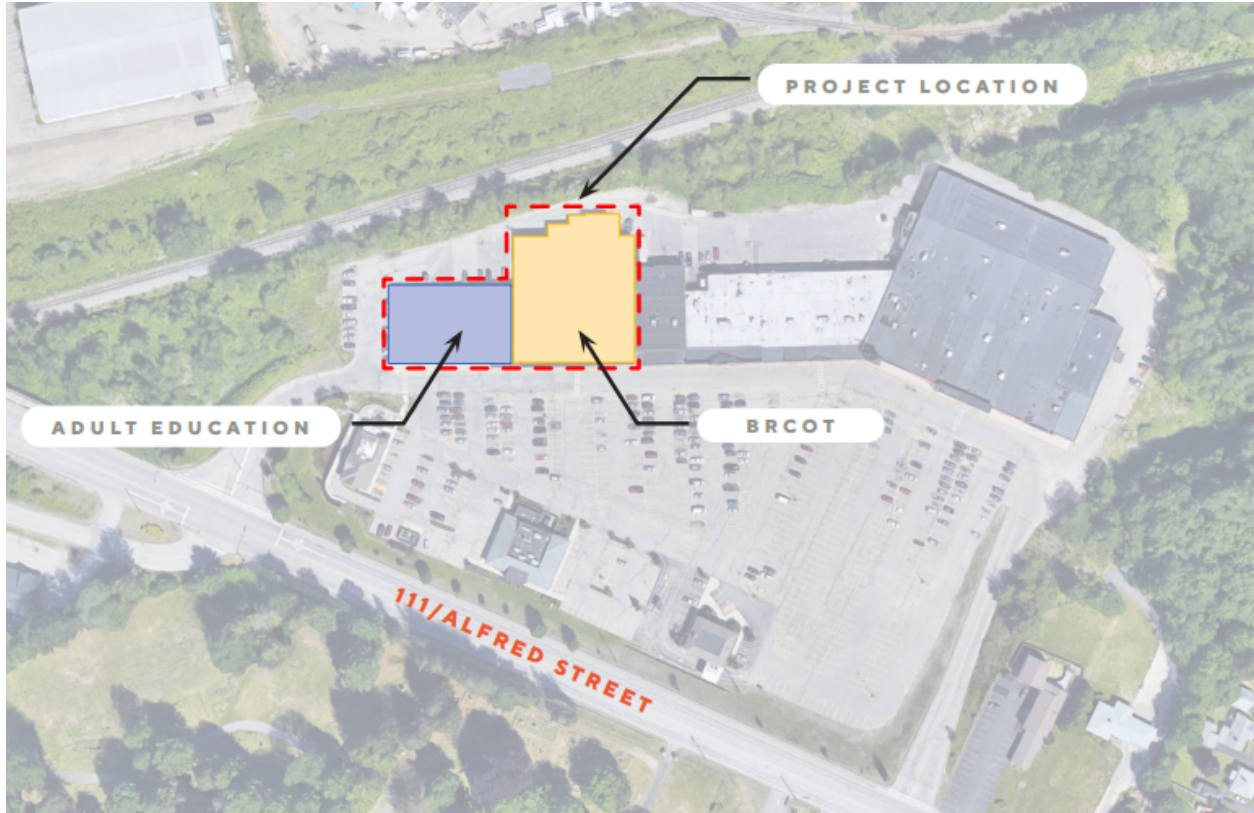
Community College System ?

Department of Labor?

Draft: December 16, 2021

Community Action?

Department of Economic and Community Development/Office of Innovation



PROJECT SIZE

- BRCOT: 25,000 SQFT**
- ADULT ED: 15,000 SQFT**

TOTAL SQFT: 40,000 SQFT

